



## Advanced TPMS for Off-the-Road (OTR) Vehicles

**TMS®** is a leading designer and manufacturer of reliable and accurate real-time Tire Pressure and Temperature Monitoring Systems (TPMS). We design our TPMS specifically for large industrial and Off-the-Road (OTR) vehicles, covering industries such as mining, construction and earthmoving, mobile lifting, ports and mass transit systems.

### Advantages of using a reliable TPMS

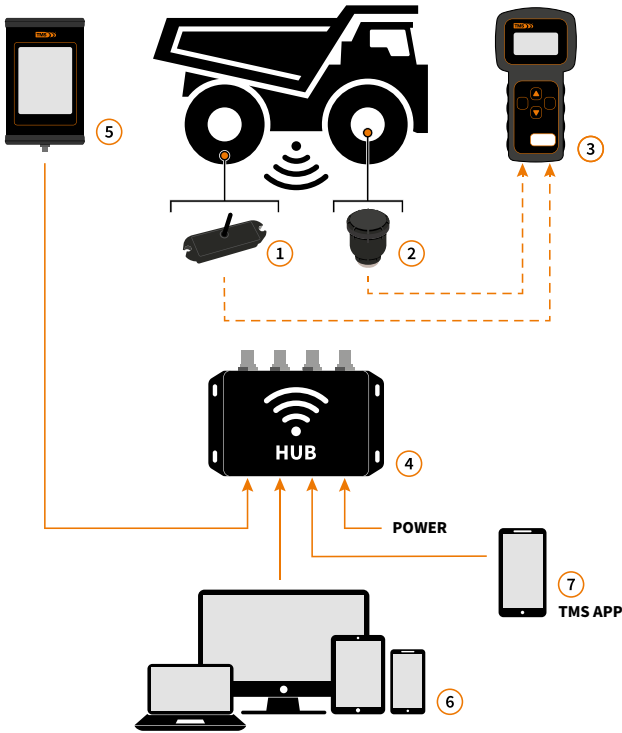
A quality TPMS is undeniably important to your business. Running your vehicles' tires at the incorrect pressure can cause blow-outs, tire damage and other safety issues, as well as affecting their performance, and increasing fuel costs. So, installing a reliable TPMS is essential for:

- Improved driver and vehicle safety
- Enhanced tire performance and tire life
- Reduced vehicle downtime
- Increased fuel efficiency
- Improved productivity

### Why choose TMS®?

- For almost 30 years we've been making TPMS specifically for **industrial and OTR vehicles**. Our advanced, ruggedised TPMS solution can withstand the most challenging conditions. What's more, it easily handles severe vibration, extreme temperature cycling from -25C to 100C, and tire pressures up to 200psi.
- TMS® is completely independent from any tire manufacturer. Consequently, our TPMS is **compatible with every size of tire and every major tire manufacturer** for any industrial vehicle. This enables you to choose the best tires for your business for each application and each vehicle. So, you have the flexibility to change tire suppliers as required, bringing you huge cost savings on tires.
- Our TPMS offers unmatched sensitivity, utilising up to four antennas, for transmission redundancy. This ensures **total reliability even on the largest of vehicles and on vehicles up to 24 wheels**, even when surrounded by tonnes of metalwork and electrical interference. Unlike many systems, the TMS® system compensates for altitude, to give accurate, reliable real-time data.
- Once the data is collected using the TMS® system, the free App gives you the power to analyse and report on this data for your whole fleet. Armed with this data, you can **efficiently plan all tire maintenance and replacement** schedules and so minimise downtime.
- By combining our TPMS solution with **TMS-Remote** you can make the system **fully connected** - the data provided on the vehicle is made available **off the vehicle**. The telematics unit and remote monitoring portal allows users to view information and receive Warnings and Alarms remotely as they happen. Vehicle location and tire data is provided through the cellular network and GPS.





## The Standard System

Our standard TPMS solution consists of Internal or External Sensors, the Hub, Display and Sensor Reader, together with a free TMS® App.

The Sensors have various mounting options to suit the application. The sensors are connected wirelessly to the Hub through our unique multi-redundant antenna system ensuring no data is lost.

The App is used to configure the system and also to analyse and report on collected data offline.

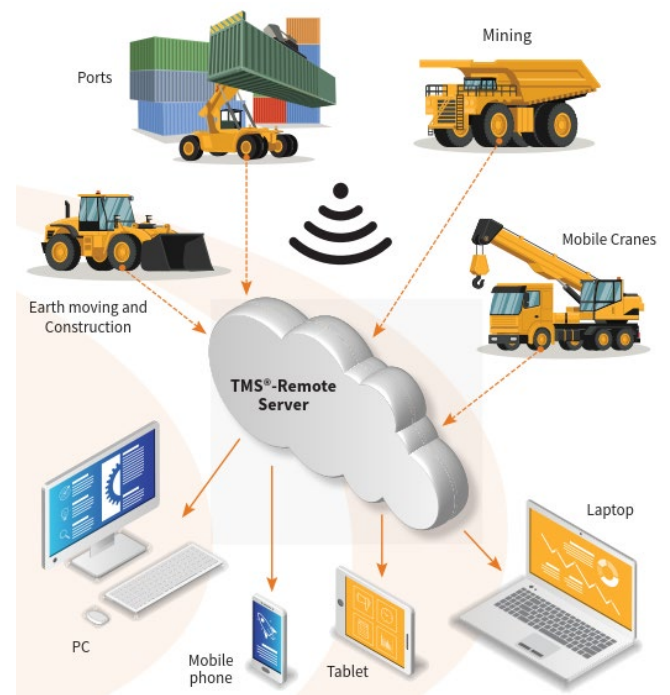
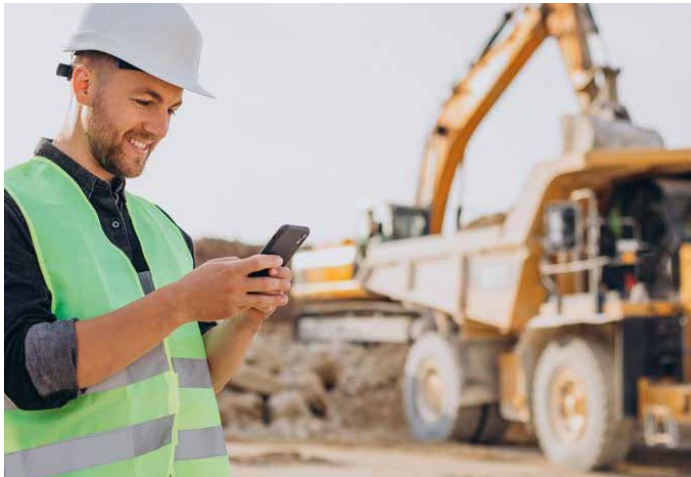
## Trial systems

We are happy to offer you a trial of our complete TPMS. Test the accuracy and reliability of our easy to install system on your own OTR vehicles. See how the data can improve vehicle safety, tire performance and reduce costs.

[Get in touch](#) today to **try before you buy**.

## Fully Connected System with *TMS-Remote*

To make the system fully connected with the outside world we can simply add our telematics package and remote web portal. Any authorised manager will be able to see all the pressures and temperatures on every wheel on every vehicle across the whole fleet - from a simple overview, to detailed data, charts, locations and signal strength.



With a proven track-record and reliable innovative products, TMS® can help you achieve maximum vehicle uptime, increased safety, productivity, and profitability. So **[GET IN TOUCH TODAY](#)** to find out how your company can benefit



[www.tiremonitorsystem.com](http://www.tiremonitorsystem.com)

**UK Office & Manufacturing**  
Tire Monitor System Ltd  
West Road House  
West Road  
Buxton SK17 6HF

+44 (0)1298 77166  
[enquiry@tiremonitorsystem.com](mailto:enquiry@tiremonitorsystem.com)

**USA Office**  
Tire Monitor System LLC  
1531 Stuyvesant Avenue, Suite A  
Union  
New Jersey 07083

+1 908 688 6706  
[enquiry.na@tiremonitorsystem.com](mailto:enquiry.na@tiremonitorsystem.com)